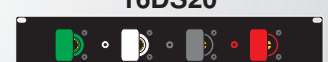
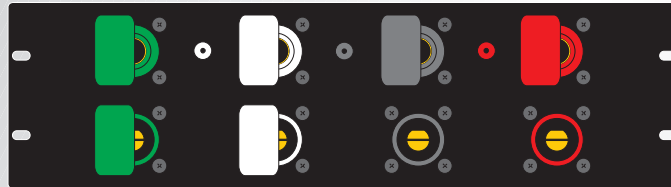


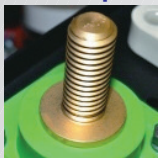


Series 16 Camlock Assembly Panels



The Series 16 Camlock panel family is based around 15 Connector/Snapdoor combinations with two swappable meter panels. The primary components are the five color 400a 16 series camlock male (16R23) and female (16R24) connectors, hinged five color snapdoors and panel mount test points. Panels are available as input only, Pass thru only, Input w/ pass thru and Dual pass thru. Seven hardware kits are provided to align panel with user configuration. Panel construction is made from 16g Mild steel, Powdercoated black w/ standard EIC rack holes.

Cam Opt 0



No Hardware

Cam Opt 1



Lug on Each Cam

Cam Opt 2



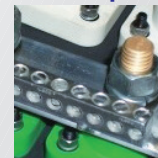
Aluminum Strap

Cam Opt 3



Strap with Swivel Lug

Cam Opt 6



Strap with (8) #4 Lugs

Cam Opt 7



Strap with (16) #4 Lugs

DR - DimmerRack
CAM - Camlock

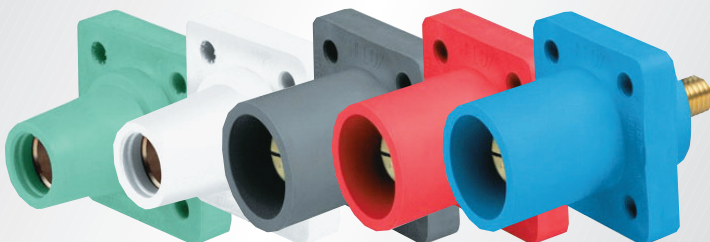
15 - 15 Series
16 - 16 Series

S - All Male Input
All Female Pass
R - Reverse N&G

0-7 Hardware Option

DRCAM - 16 - H - S - 3 - 0

1-In, 2-Pass, 3-In/Pass, 4-Dual Pass



D - 4cam Single Phase
E - 5cam Three Phase
H - 8cam Single Phase
J - 10cam Three Phase

POWERED BY

